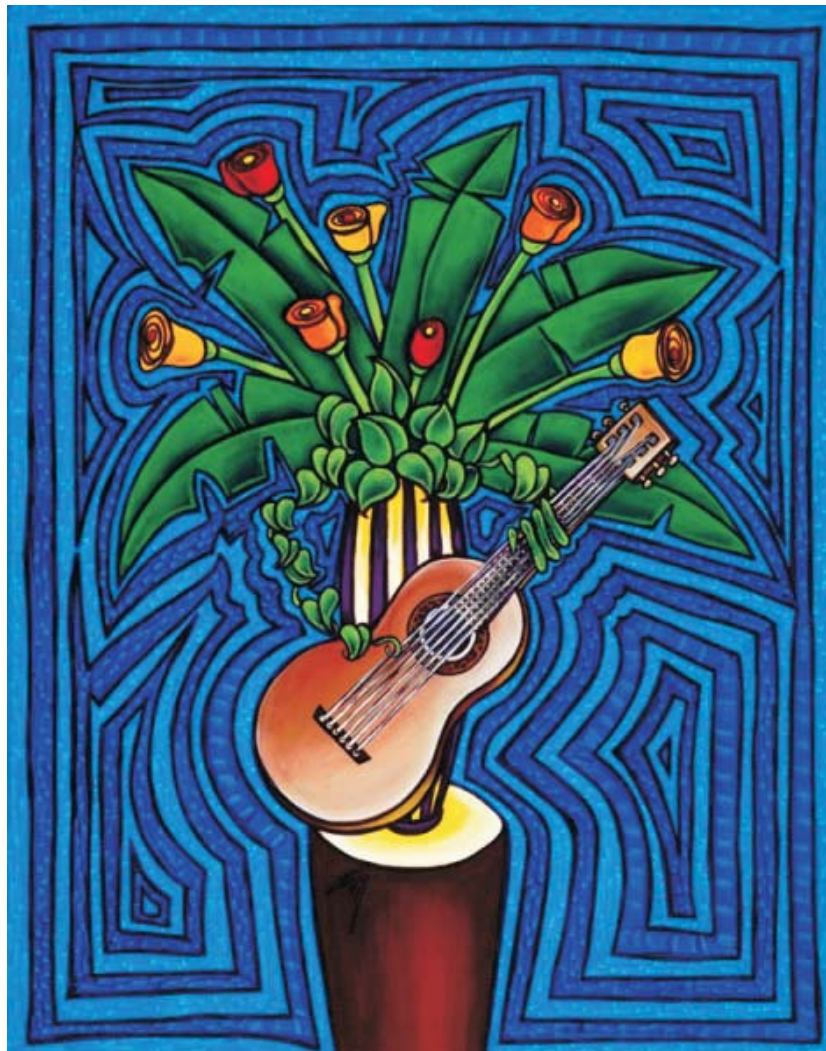


El ramillete

Pedro Antonio Iparraguirre



El ramillete

Pedro Antonio Iparraguirre

1. Nardo
2. Camelia
3. Dalia

Nardo

El Ramillete, nr.1

Pedro Antonio Iparraguirre

gitaar

Vals

C.V.

Detailed description: This block contains the first six measures of the piece. It is written for guitar in 3/4 time. The key signature has one sharp (F#). The first measure is a whole note chord. Measures 2-3 are a first ending with a repeat sign. Measures 4-5 are chords. Measure 6 is a whole note chord. A dashed line above the staff indicates a change in fingering or technique labeled 'C.V.'.

7

C.IV

C.V

Detailed description: This block contains measures 7-11. Measure 7 is a whole note chord. Measures 8-9 are eighth notes. Measure 10 is a half note chord. Measure 11 is a whole note chord. A dashed line above the staff indicates a change in fingering or technique labeled 'C.IV'. Another dashed line above the staff indicates a change in fingering or technique labeled 'C.V'.

12

1.

Detailed description: This block contains measures 12-16. Measure 12 is a half note chord. Measures 13-14 are eighth notes. Measure 15 is a half note chord. Measure 16 is a whole note chord. A bracket above the staff indicates a first ending for measures 15-16, labeled '1.'.

17

2.

Detailed description: This block contains measures 17-24. Measure 17 is a half note chord. Measures 18-19 are eighth notes. Measure 20 is a half note chord. Measure 21 is a whole note chord. Measure 22 is a half note chord. Measure 23 is a whole note chord. Measure 24 is a whole note chord. A bracket above the staff indicates a second ending for measures 17-24, labeled '2.'.

25

Detailed description: This block contains measures 25-29. Measure 25 is a half note chord. Measures 26-27 are eighth notes. Measure 28 is a half note chord. Measure 29 is a whole note chord.

30

1.

2.

Detailed description: This block contains measures 30-34. Measure 30 is a half note chord. Measures 31-32 are eighth notes. Measure 33 is a half note chord. Measure 34 is a whole note chord. A bracket above the staff indicates a first ending for measures 33-34, labeled '1.'. A bracket above the staff indicates a second ending for measures 30-34, labeled '2.'.

35 C.V.-----

43

47 Fine

52

60

65 1. 2. D.S. al Fine

Camelia

El Ramillete, nr.2

Pedro Antonio Iparraguirre

Mazurka

gitaar

5

9

13

17

21

25

29

C.II

C.III

C.II

C.II

C.II

C.IV

C.II

C.IV

Fine

D.C. al Fine

Dalia

El Ramillete, nr.3

Pedro Antonio Iparraguirre

Habanera

gitaar

8

8

16

21

27

35

8

40

para seguir para Fine

8

44

8

50

8

55

D.C. al Fine

8